

Elm Park Road, Chelsea, SW3

2 Bedrooms



Information



Apartment Snapshot

Bedrooms: 2

Sleeps: 4

2 bedrooms, 2 bathrooms,
reception room, kitchen, terrace,
lift.

Price band: C

AUD\$3,530.00 - \$5,290.00

Nearest Tube: South Kensington

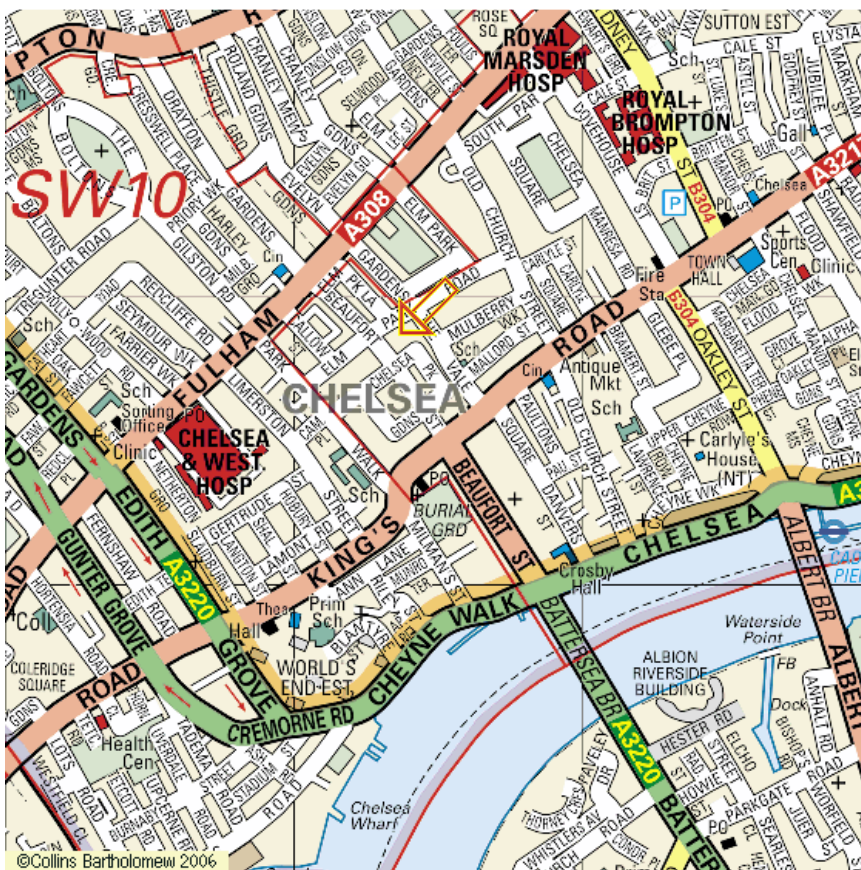
This immaculate interior designed flat is situated in this period building in one of London's best residential locations. The flat is on the 3rd and 4th floors, with lift and on entering there is a good size hall off which are the bedrooms and bathrooms. The master bedroom has queen-size double bed and good closet space with 2 sash windows overlooking gardens and an en suite shower room with glass power shower stall, wash hand basin and loo. The second bedroom is also a good size with queen-size double bed and good closet space. The bathroom is adjacent and has bath with power shower over tub, wash hand basin and loo. Stairs from the hall lead up to the reception space which is very generous and has a dining area with table seating 4 and this leads to the seating area with sofa, armchairs, decorative shelving and large doors onto the terrace which has a small table and chairs. The kitchen is also very well fitted with good storage, fridge/freezer, washer/dryer, oven, hob (stove top), dishwasher and granite work surfaces. Altogether a very attractive, beautifully designed and furnished flat offering good space well located for all the many shops, restaurants and amenities of the Fulham Road, Kings Road, South Kensington and Brompton Cross. The nearest underground is at South Kensington which is a 10 - 12 minute walk away.

Elm Park Road, Chelsea, SW3

2 Bedrooms



Map & More Information



Hans Place, Knightsbridge, SW1

Flat



Information



Apartment Snapshot

Bedrooms: 2

Sleeps: 4

2 Bedrooms, 2 Bathrooms, Spacious Living/Dining Area, Kitchen, Terrace, Lift. High Speed Internet Access. 3 Plasma Screen Wall Mounted TV's with Sky.

Price band: D \$5,290.00+

Nearest Tube: Knightsbridge

This spacious second floor flat with a lift, is decorated to a high standard in a contemporary style with oriental touches. The flat is located in this prestigious garden square in the heart of Knightsbridge immediately behind Harrods. On entering the flat there is an elegant hall off which is the well fitted kitchen with good storage, dishwasher, washer/dryer, fridge/freezer, oven, hob (stove top) and is finished in wood with granite work tops. The master bedroom is very spacious with a beautiful bay window overlooking the gardens of Hans Place. It has a king-size (6') bed with good storage and also a wall mounted plasma screen TV with Sky. The bathroom is adjacent up a few stairs and has bath with power shower over bath, wash hand basin and loo. The second bedroom is a good size room with queen size (5') bed, cupboards, wall mounted plasma screen TV with Sky - it has an en suite shower room with power shower stall, wash hand basin and loo. The large living room has sofas, chairs and a wall mounted plasma screen TV with Sky. Adjacent is the dining area with a table seating 6. This leads onto the large decked terrace - which is quietly located at the back of the building. The numerous tubs and pots are full of plants which are well tended. There is a seating area at one end overlooking the open views over the rooftops of London. A very elegant and spacious flat located in the heart of Knightsbridge, a shopper's paradise and famous for its many designer boutiques and restaurants. The nearest underground is at Knightsbridge which is a 4 minute walk away. The flat has four separate connection points for High Speed Internet access. This is a Non Smoking Flat.

Hans Place, Knightsbridge, SW1

Flat



Map & More Information



Stanhope Gardens, South Kensington, SW7

Flat



Information



Apartment Snapshot

Bedrooms: 2

Sleeps: 4

2 Bedrooms, 2 Bathrooms, Sitting room, Eat-in Kitchen. Wrap Around Ornamental Balcony. Cable TV. WiFi High Speed Internet Access.

Price band: C

AUD \$3,530.00 - \$5,290.00

Nearest Tube: Gloucester Road

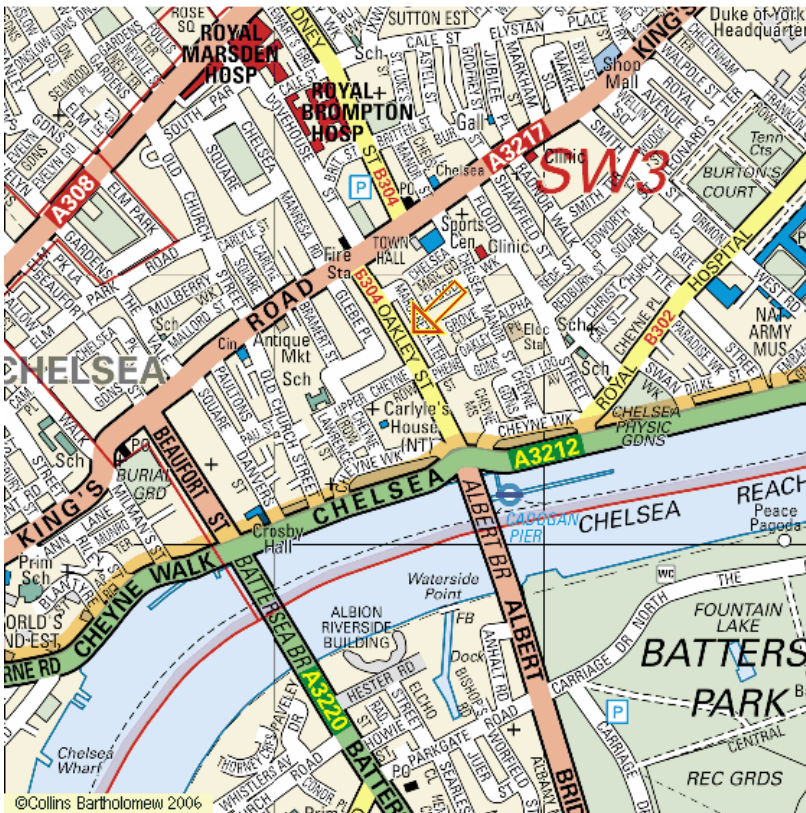
This elegant well presented and most attractive 1st floor flat (no lift) has high ceilings, lovely views over gardens, and each window giving onto a ornamental balcony. The flat has a very spacious double aspect sitting room, with wood flooring, decorative fireplace and comfortable seating. There are two king double bedrooms (6'), both zip and link and therefore can be made as twin beds. Each has a bathroom, one is ensuite with bath, shower stall, wash hand basin and loo and the other has a shower stall, wash hand basin and loo. The spacious kitchen/dining room has large windows with excellent working kitchen area finished in chrome including, fridge/freezer, double oven/microwave, hob (stove top), and dishwasher. An oak table seats 4 - 8. There is a washer and dryer housed in a hall cupboard. Both Gloucester Road and South Kensington underground stations are a short walk away. Sorry no small children are accepted and this is a Non Smoking Flat.

Stanhope Gardens, South Kensington, SW7

Flat



Map & More Information



St Petersburg Place, Notting Hill, W2

Flat



Information



Apartment Snapshot

Bedrooms: 2

Sleeps: 4

2 Bedrooms, 2 Bathrooms,
Kitchen, Dining Room, Drawing
Room, Terrace, Entrance Hall.
High Speed Internet Access.
Digital Flatscreen TV. Lift.

Price band: C

AUD \$3,530.00 - \$5,290.00

Nearest Tube: Notting Hill Gate

A newly decorated, interior designed 1st floor flat with the lift access going straight into the flat. The spacious drawing room is very comfortably furnished with antique pieces, sofa, armchairs, fireplace, bookshelves and a 'hidden' study area behind fitted cupboard doors. The kitchen is very well fitted and has all machines including hob (stove top), oven, fridge/freezer, dishwasher and washer/dryer. Adjacent to the kitchen is the dining area which leads to a spacious roof terrace with decking and outdoor furniture. The master bedroom has queen-size (5') bed with good cupboards, the ensuite bathroom has a bath, shower stall, wash hand basin and loo. The second bedroom has twin beds and good cupboards. The second bathroom has bath, overhead shower, wash hand basin and loo. The house is set well back from the street behind a most attractive communal garden. This quiet residential, tree lined street is only moments from Notting Hill with all its famous shops and restaurants. Portobello Market is also nearby. A 15 minute walk through Kensington Gardens (at the end of the road) brings you to Knightsbridge. Sorry no young children's and this is a Non Smoking flat.

St Petersburg Place, Notting Hill, W2

Flat

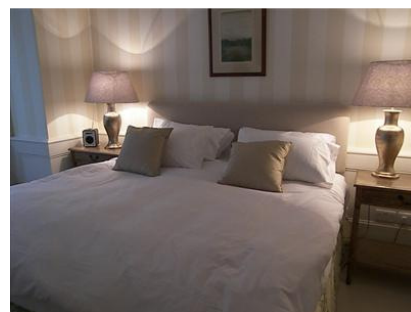


Map & More Information



Sloane Gardens, Chelsea, SW1

Flat



Information



Apartment Snapshot

Bedrooms: 2

Sleeps: 3

2 Bedrooms, Bathroom, Drawing Room, Kitchen, Lift. High Speed Internet Access.

Price band: C

AUD \$3,530.00 - \$5,290.00

Nearest Tube: Sloane Square

An extremely elegant and well decorated second floor flat conveniently located close to Sloane Square. On entering the flat there is a small hall which leads into the spacious sitting room with high ceilings, comfortable seating, decorative fireplace and book shelves. There is a dining area to seat 4. The kitchen is adjacent, attractively finished with granite worktops and incorporating a dishwasher, washer/dryer, hob (stove top), oven, microwave and fridge/ freezer. The master bedroom is spacious also with high ceilings, bay window, king-size (6') bed and walk in cupboard. The second bedroom has convertible single bed, with good cupboards. The bathroom is very well fitted with a bath and a fixed overhead shower, wash hand basin and loo. Altogether a very elegant and comfortable flat wonderfully located for all the many shops, restaurants and amenities of the Kings Road. The nearest underground is Sloane Square, a 3 minute walk away. This is a Non Smoking flat.

Sloane Gardens, Chelsea, SW1

Flat



Map & More Information

